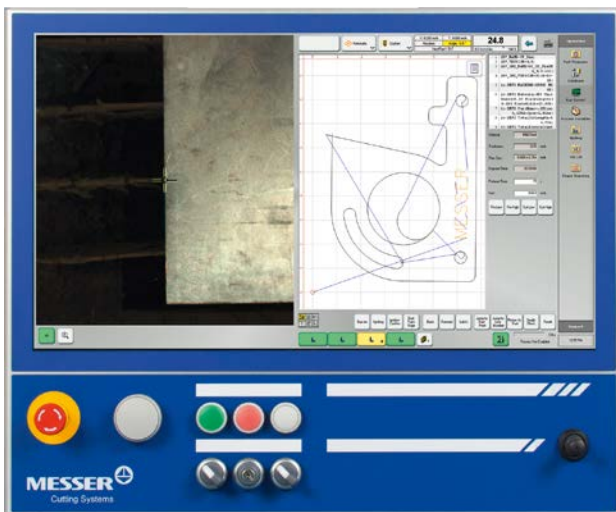


GLOBAL CONTROL **Plus**

Globally Developed for Worldwide Use

MESSERS GLOBAL CONTROL ^{Plus}. ADVANCED TECHNOLOGY, HIGH RELIABILITY, AND EASY TO USE.

Messer Cutting Systems Global Control ^{Plus} has an easy to use interface and on-board database, allowing for quick set-up and high quality cut parts. An extensive custom shape library, multiple process databases, CAD import, true-shape nesting, productivity monitoring and remote diagnostics features packaged in the industry's only IP65 rated enclosure. Easy to learn functions allow for a quick familiarisation for new employees to achieve expert results.



High strength machined aluminium enclosure



Hardened switches and industrial touchscreen

GLOBAL CONTROL^{Plus} TECHNICAL GUIDE

Technical Data

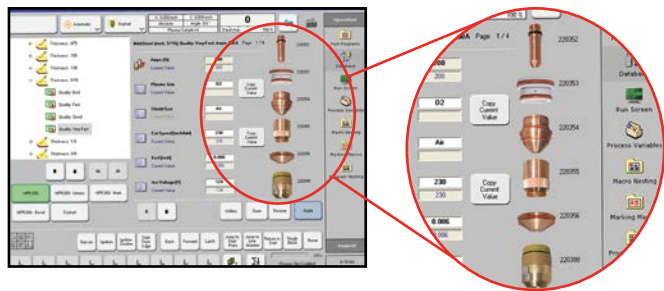
Operating System	MS Windows 7	Ethernet Netzwerk	10/100/1000 Mbps
Display	15" LED Colour Touch Screen (24" Screen optional)	Ambient Temperature	0 °C - 45 °C
Processor	≥ Intel® 1.9 GHz, 2 cores	Protection	UPS Battery Pack, Disk Image
Memory/Storage	≥ 4 GB DDR-RAM ≥ 2.5" 320 GB SATA Hard Drive	Inputs/Outputs	I/O via real-time EtherCat Bus System
Environment	IP65 (No ingress of dust or water)	USB Ports	2 USB Ports (1 with 24" Screen)

FEATURES AND BENEFITS:

- Multiple process database make every operator an expert
- Modern graphic interface minimises the learning curve
- Industrial CNC computer with integrated PLC and motion control eliminates expensive proprietary cards while providing high performance and reliability
- Ethernet-based I/O system (EtherCAT) provides real-time updates with minimal cables shielded against RF noise
- True shape nesting and direct import of CAD files allow parts to be cut quickly on the shop floor with minimum scrap and without additional resources
- More than 50 standard shapes are included. The software also allows for additional custom shapes to be created by the user
- An eight position joystick and feedrate override dial create an operator-friendly panel
- Backup Tool keeps a copy of the hard drive to minimise downtime due to virus activity, malware, etc.

OPTIONAL FEATURES:

- Video camera(s) for alignment and process viewing



Cutting parameter database (plasma/oxyfuel) with display of consumables makes process set-up quick and error-free



Video camera (right) allows for fast, accurate plate alignment

Messer Cutting Systems GmbH
Otto-Hahn-Strasse 2-4
64823 Gross-Umstadt
Germany
Tel. +49 (0) 6078 787-0
Fax +49 (0) 6078 787-150
info@messer-cutting.com
www.messer-cs.de