



GLOBAL CONTROL^S

Globally Developed for Worldwide Use

MESSER GLOBAL CONTROL^S: ADVANCED TECHNOLOGY, HIGH RELIABILITY, EASY TO USE, AND COMPACT.

Our exclusive CNC control includes expertise gained from thousands of machine installations around the world. An extensive custom shape library, multiple process databases, CAD import, true-shape nesting, productivity monitoring and remote diagnostics are just some of the key features packaged in the industry's only IP65 rated enclosure. Easy to learn functions allow for a quick familiarisation for new employees to achieve expert results.



Hardened switches and industrial touchscreen



High strength machined aluminium enclosure

GLOBAL CONTROL^S

TECHNICAL GUIDE

Technical Data

Operating System	MS Windows 7	Ethernet Network	10/100/1000 Mbps
Display	15" LED Color Touch Screen	Ambient Temperature	0 °C - 45 °C
Processor	≥ Intel® 1.9 GHz, 2 cores	Protection	UPS Battery Pack, Disk Image
Hard Drive	≥ 2 GB DDR-RAM ≥ 2.5", 320 GB SATA Hard Drive	Inputs/Outputs	I/O via real-time EtherCAT Bus System
Environment	IP65 (No ingress of dust or water)	USB Ports	2 USB Ports

FEATURES AND BENEFITS:

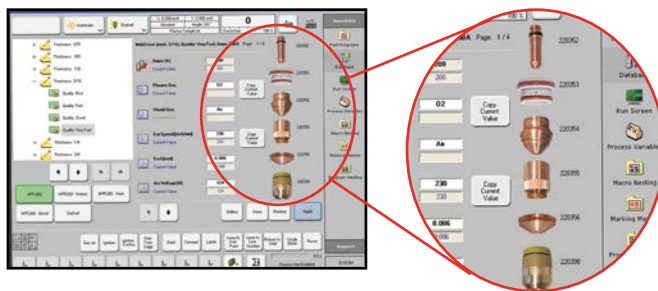
- Multiple process databases make every operator an expert
- Modern graphic interface minimises the learning curve
- Industrial CNC computer with integrated PLC and motion control eliminates expensive proprietary cards while providing high performance and reliability
- Ethernet-based I/O system (EtherCAT) provides real-time updates with minimal cables shielded against RF noise.
- True shape nesting and direct import of CAD files allow parts to be cut quickly on the shop floor with minimum scrap and without additional resources
- More than 50 standard shapes are included. The software also allows for additional custom shapes to be created by the user
- Backup Tool keeps a copy of the hard drive to minimize downtime due to virus activity, malware, etc.

OPTIONAL FEATURES:

- Video camera(s) can be used as alignment tool and for process viewing.
- An eight position joystick and feedrate override dial create an operator-friendly panel.

APPLICATION:

- Featured on MultiTherm® Eco, MultiTherm® and OmniMat® machine models.



Cutting parameter database (plasma /oxyfuel) with display of consumables makes process set-up quick and error-free.



Video camera featured above (right) allows for fast, accurate plate alignment.

Messer Cutting Systems GmbH
 Otto-Hahn-Strasse 2-4
 64823 Gross-Umstadt
 Germany
 Tel. +49 (0) 6078 787-0
 Fax +49 (0) 6078 787-150
 info@messer-cutting.com
 www.messer-cs.de